

Service Information Letter - Fuel Systems

SMALL RECIPROCATING
ENGINES

ALL RS/RSA

No. 22, Rev. 1

Issued 9-1-85

Page 1 of 4

SUBJECT: RS/RSA Identification Plates

NOTE: Revision 1 replaces S.I.L. 22, issued 1-28-82.

PURPOSE: To provide service stations with information pertaining to service replacement identification plates.

REASON FOR REVISION: To add Bendix Engine Products Division Identification Plate.

1. Each fuel injector assembly shipped from Bendix as original equipment carries an externally secured plate, as shown in Figure 1, on which is stamped the model designation, serial number, basic part number and installation parts list number.
2. At first normal overhaul of the fuel injector, remove the identification plate if it is the same as shown in Figures 1 thru 3 and install service identification plate PN 2542391 (Figure 4). This new service plate will carry the model designation, serial number, parts list number less issues and facility code identification.
3. Identification is made as follows:
 - A. Model designation denotes the general characteristics of the fuel injector assembly.
 - B. The serial number identifies the injector assembly from all other injector assemblies. The serial number will remain unchanged despite any subsequent modifications that might be incorporated.
 - C. The parts list number is for use in the identification of all component parts particular to the Model RS/RSA Fuel Injector. It is the bill of materials to which the unit is assembled.
 - D. An issue number is stamped as a suffix to the parts list number and is preceded by a (-). Any change or modification which affects safety-of-flight, fuel metering, interchangeability of components or required end item identification, results in a different issue number.



Bendix Energy Controls Division

717 North Bendix Drive
South Bend, Indiana 46620

- E. The less issue number on the service replacement identification plate denotes any issue changes not incorporated in the injector at the last overhaul. For example, if an issue 1 injector is modified to issue 3 without incorporating issue 2 changes, the number 2 is to be stamped in the less issues block on the identification plate. This indicates that although this injector is identified as issue 3, it lacks issue 2 changes.
- F. In Figure 4, the block marked "F.C." (Facility Code) or "LOA" (Last Overhaul Activity) is to be stamped with the 3 or 4 letter facility code used on safety wire seals or the facility FAA Repair Station Number.

NOTE: It is recommended that each facility vibra-etch the servo body casting serial number on the back side of the plate. Do not use serial number assigned to the assembled unit. The body S/N is located in the mounting area for the identification plate.

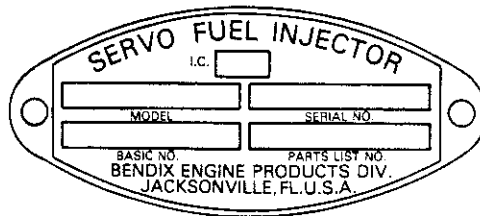


Figure 1. Jacksonville Production Plate PN 2542233 (Non-Procurable) LA-8390

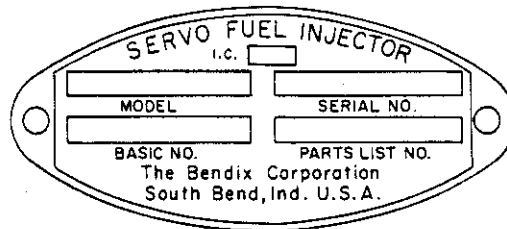


Figure 2. South Bend Production Plate PN 367756 (Non-Procurable) LA-6844

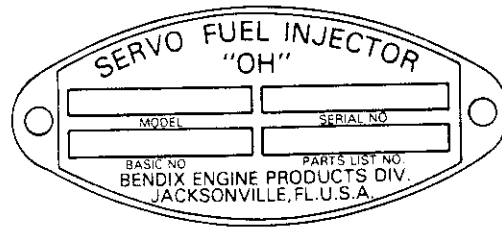


Figure 3. Factory Overhaul Plate PN 2542234 (Non-Procurable)

LA-8391

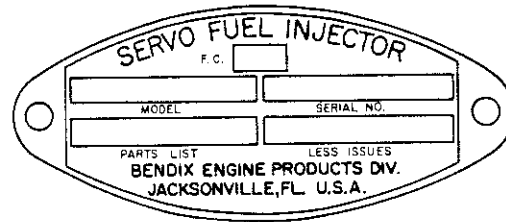


Figure 4. Service Identification Plate PN 2542391

LA-8389

K. R. Dettweiler
Manager, Product Support