

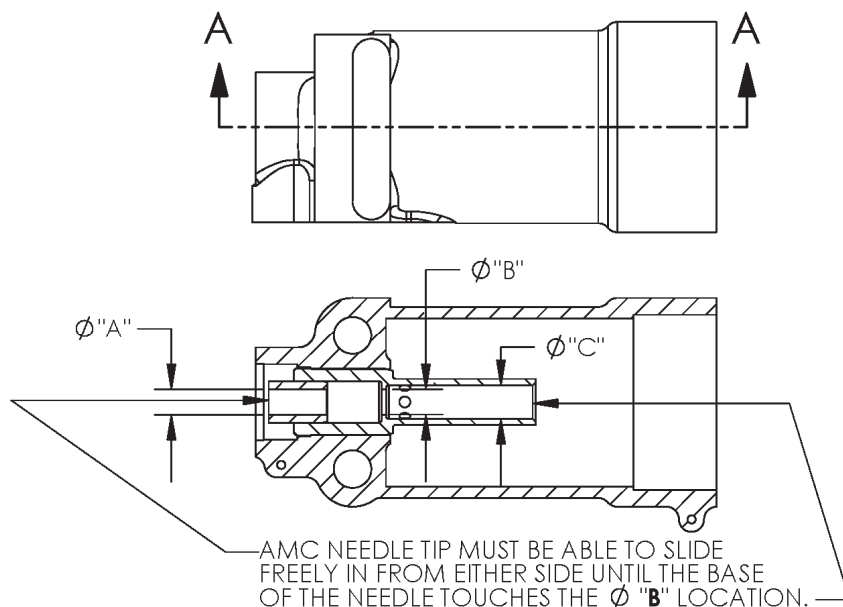
Service Information Letter - Fuel Systems

**SUBJECT: RSA-5AB1 AMC NEEDLE AND HOUSING ASSEMBLY
SERVICE AND INSPECTION WEAR LIMITS**

PURPOSE: To provide repair shops with allowable wear limits for AMC needle and housing assembly.

- A. **EFFECTIVITY:** This Service Information Letter is applicable to all RSA-5AB1 fuel injection servos.
- B. **REASON:** To supplement the RSA-5AB1 Overhaul Manual 15-419D with service inspection limits for the AMC needle and housing assembly.
- C. **DESCRIPTION:** The following information is to be added to Service and Inspection Limits found in Figure 801, page 801 of RSA-5AB1 overhaul manual 15-419D.

Figure 5, IPL	Nomenclature	Permissible Worn Dimension
35 & 35A	Needle, AMC	If part has any visible damage, part must be replaced.
50	Housing Assembly	See Figure Below For Diameter Locations Diameter A; 0.1906 inches max Diameter B; 0.1886 inches max Diameter C; 0.2501 inches max



SECTION A-A