

Service Information Letter - Fuel Systems

Small
Reciprocating
Engines
No. 26
Issued 12-8-86
Page 1 of 4

SUBJECT: INSPECTION OF BULLET-TYPE VENTURIES USED IN RSA-7 AND RSA-10 SERIES SERVO FUEL INJECTORS

PURPOSE: To more accurately define inspection and permissible repairs to bullet-type Venturi housings.

During overhaul of any control containing a bullet-type venturi, inspect the housing per Figures 1 and 2. Repair of the housing is limited to removing raised metal burrs.

CAUTION: BULLET VENTURIES HAVE CALIBRATED HOUSINGS - DO NOT ATTEMPT TO BLEND, POLISH OR OTHERWISE MODIFY SURFACES A, B, C AND D FIGURE 2. TO DO SO MAY AFFECT ITS CALIBRATION AND THE OPERATION OF THE SERVO IN WHICH IT IS INSTALLED.

Inspect the housing per Figures 1 and 2. Any housing not meeting inspection criteria should be replaced. It is recommended that a copy of Figures 1 and 2 be placed in the CHECK section of all affected overhaul manuals until changes are processed.



Bendix Energy Controls Division

717 North Bendix Drive
South Bend, Indiana 46620

IPL Figures	Nomen.	Inspect	Maximum Serviceable Limits	Maximum Repairable Limits	Corrective Action
	Housing Ref. Fig. 2.	Edge A	No damage permitted. Edge must be sharp and well defined.	Not Repairable	Replace
		Surface B (Ground area rough surface)	No raised metal permitted.	Any amount	Remove only raised metal. Do not polish or blend.
		Surface C	No raised metal permitted.	Any amount	Remove only raised metal. Do not polish or blend.
		Surface D	No raised metal permitted.	Any amount	Remove only raised metal. Do not polish or blend.
		Surface E	Surface damage acceptable.	Any amount	Remove raised metal with polishing paper.
		Threads F	No damage permitted.	Not repairable	Replace

Figure 1.

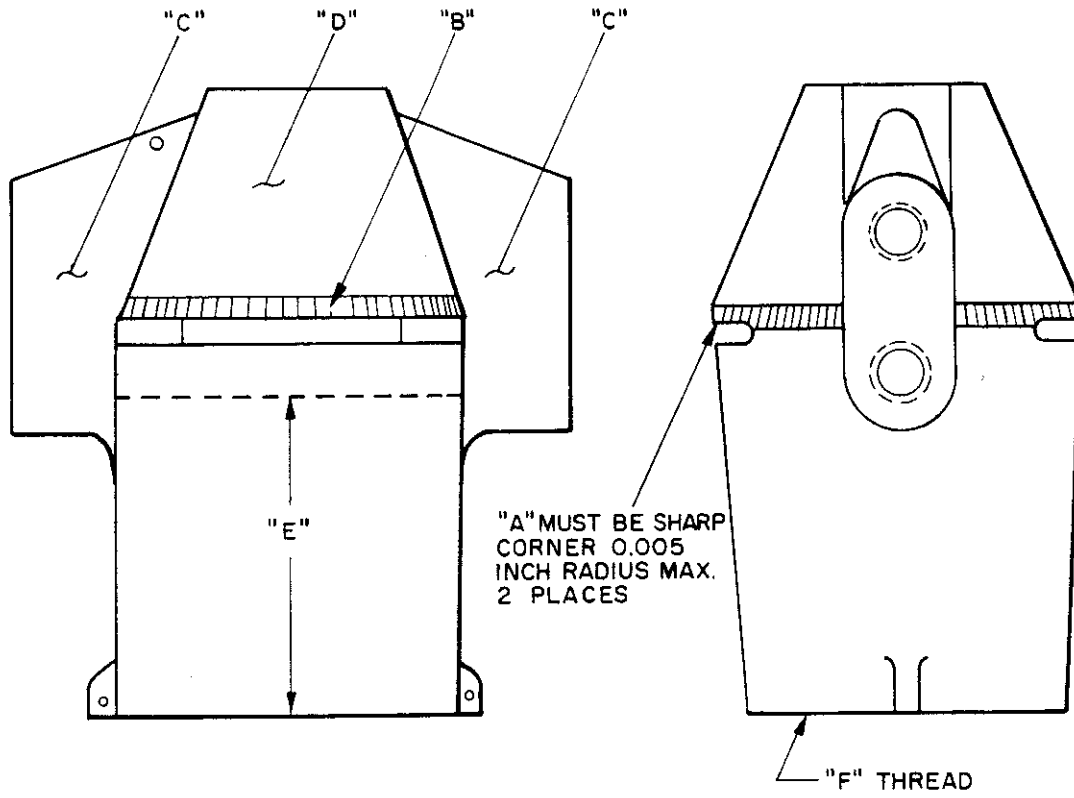


Figure 2.

LA-8618

K. R. Dettweiler
K. R. Dettweiler
Manager, Product Support